

DRAFT

2019 ORIENTAL DINGHY CLUB ORIENTAL CUP REGATTA September 13, 14 & 15, 2019

—SAILING INSTRUCTIONS—

PHRF and CRUISING FLEET

1 RULES

- 1.1 The regatta will be governed by the rules as defined in *The Racing Rules of Sailing 2019 - 2020*.
- 1.2 A violation of rule 55 can result in a penalty other than disqualification.

2 NOTICES TO COMPETITORS

- 2.1 Notices to competitors will be posted on the official notice board.

3 CHANGES TO SAILING INSTRUCTIONS

- 3.1 Any changes to the sailing instructions will be posted before 08:15 am on Saturday.
- 3.2 Oral changes to the sailing instructions may be given on the water by hail or VHF from the Signal Boat under code flag "L".

4 SIGNALS MADE ASHORE

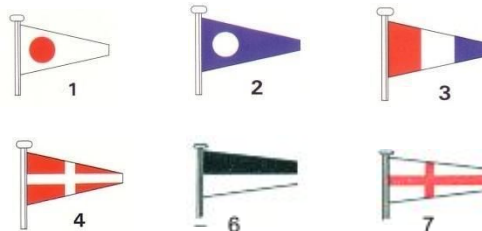
- 4.1 Signals made ashore will be displayed on the official notice board in the breezeway near the OI&M office.
- 4.2 When AP flag is displayed ashore '1 minute' is replaced with 'not less than '60 minutes' in the race signal AP. This changes race signal AP.

5 SCHEDULE OF RACES

- 5.1 Dates of racing: Saturday, September 14, 2019.
- 5.2 Number of races: We will attempt to hold three races but one race will constitute a regatta.
- 5.3 The scheduled time of the first warning signal for PHRF and Cruising races is 12:30
- 5.4 When the Signal boat hoists the Lima flag, all boats shall pass by the starboard side of the signal boat and check in with the race committee prior to their warning signal.
- 5.5 Cruising Class will have a Pursuit start from a separate Start / Finish line east of Whittaker Creek.. The first signal will be at 12:30. Start time off-sets and course diagrams will be provided at the skippers meeting.

6 CLASS / DIVISION FLAGS

- 6.1 Spinnaker A Numeral Pennant 1
- Spinnaker B Numeral Pennant 2
- Spinnaker C Numeral Pennant 3
- JAM A Numeral Pennant 4
- JAM B Numeral Pennant 6
- Cruising Numeral Pennant 7



PHRF rating bands within the divisions (if necessary)

JAM A - PHRF greater than 168 *

JAM B - PHRF equal to or less than 168 *

Spin A - PHRF greater than 168 *

Spin B - PHRF equal to or less than 168 *

Cruising Division- Pursuit Race

Note: There will be a separate start and race course for the cruising fleet

7 RACING AREA

7.1 The racing area will be on the Neuse River near Oriental.

8 COURSES

8.1 The signal boat will set courses in the waters off of Oriental, NC.

8.2 The courses to be sailed will be displayed on the Signal Boat prior each class's Warning Signal. Classes may be assigned different courses. The courses may be single or multiple windward/leeward (WL), triangle (T), or combinations.

8.3 The cruising class will sail a separate single, longer course with a separate Start / Finish line..

8.4 Course diagrams are shown in the appendix to these sailing instructions.

9 MARKS

9.1 Marks (W), (L) and Jibe Mark (J) are orange marks & the start/finish mark is a yellow mark.

10 THE START AND FINISH

10.1 The start and finish line will be between the orange flag on the signal boat and the adjacent start/finish mark.

10.2 The Start/Finish Line is closed except for starting and finishing for any W/L, T or TWL course.

11 SCORING

11.1 The Handicap system will be PHRF Time-on-Time. There will be no throw-outs.

12 TIME LIMIT

12.1 The time limit for the first boat to finish in a division will be 2 hours.

12.2 Boats still racing 30 minutes after the first boat in their division sails the proper course and finishes, and not thereafter retiring, will be scored TLE (Time Limit Expired). This changes rules 35, A5 and A11.

12.3 Boats scored TLE will be scored by the race committee points equal to the number of boats in their class/division finishing within the time limit plus two without a hearing. This changes rule A4.2

13 PROTESTS AND REQUESTS FOR REDRESS

13.1 A boat intending to protest shall report to the race committee at the signal boat or windward finish boat as soon as possible after finishing, giving the race committee its sail number and the sail number(s) of the protested boat(s).

13.2 Protest forms will be available on the official notice board.

13.3 Protests must be filed with the race committee at regatta headquarters on the deck at the Oriental Marina and Inn within 1 hour after the signal boat docks after the last race of the day.

13.4 As soon as practicable after the protest time limit, the protest committee will post a notice to inform competitors of the schedule of hearings in which they are parties or named as witnesses and the location of the hearings.

14 RADIO COMMUNICATION

14.1 A designated observer on the RC may report visual signals displayed by the race committee over US VHF Channel 78A. Information reported by the designated observer is provided as a courtesy to competitors and does not in any way alter the competitor's responsibility to observe the race committee's visual signals which govern the conduct of the racing. Errors or omissions on the part of the designated observer will not be grounds for requesting redress.

14.2 All boats shall maintain an operating VHF radio.

PHRF Race Committee will use 78A.

Cruising Class Race Committee will use 72.

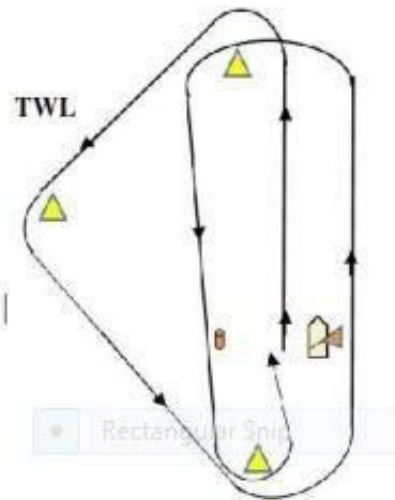
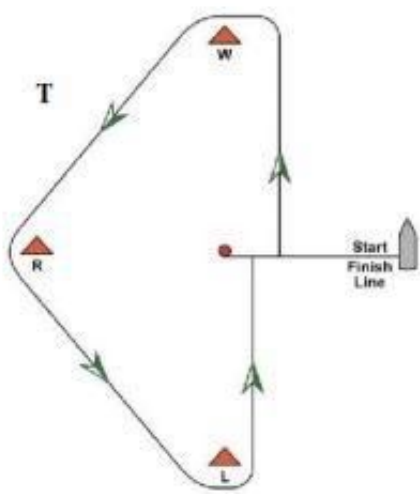
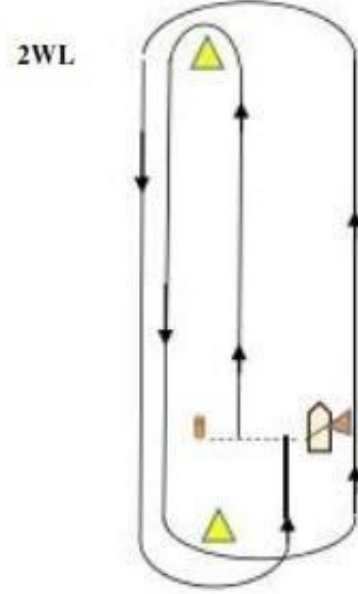
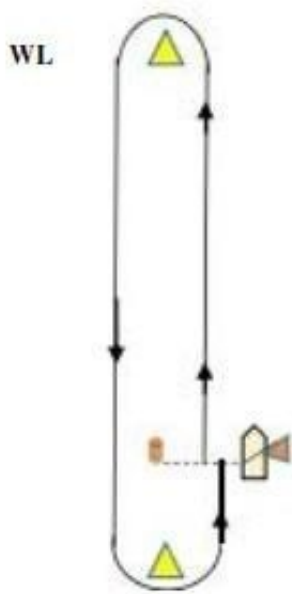
15 PRIZES

Trophies for Saturday races will be awarded at the Regatta Social at O Town Restaurant on Saturday..

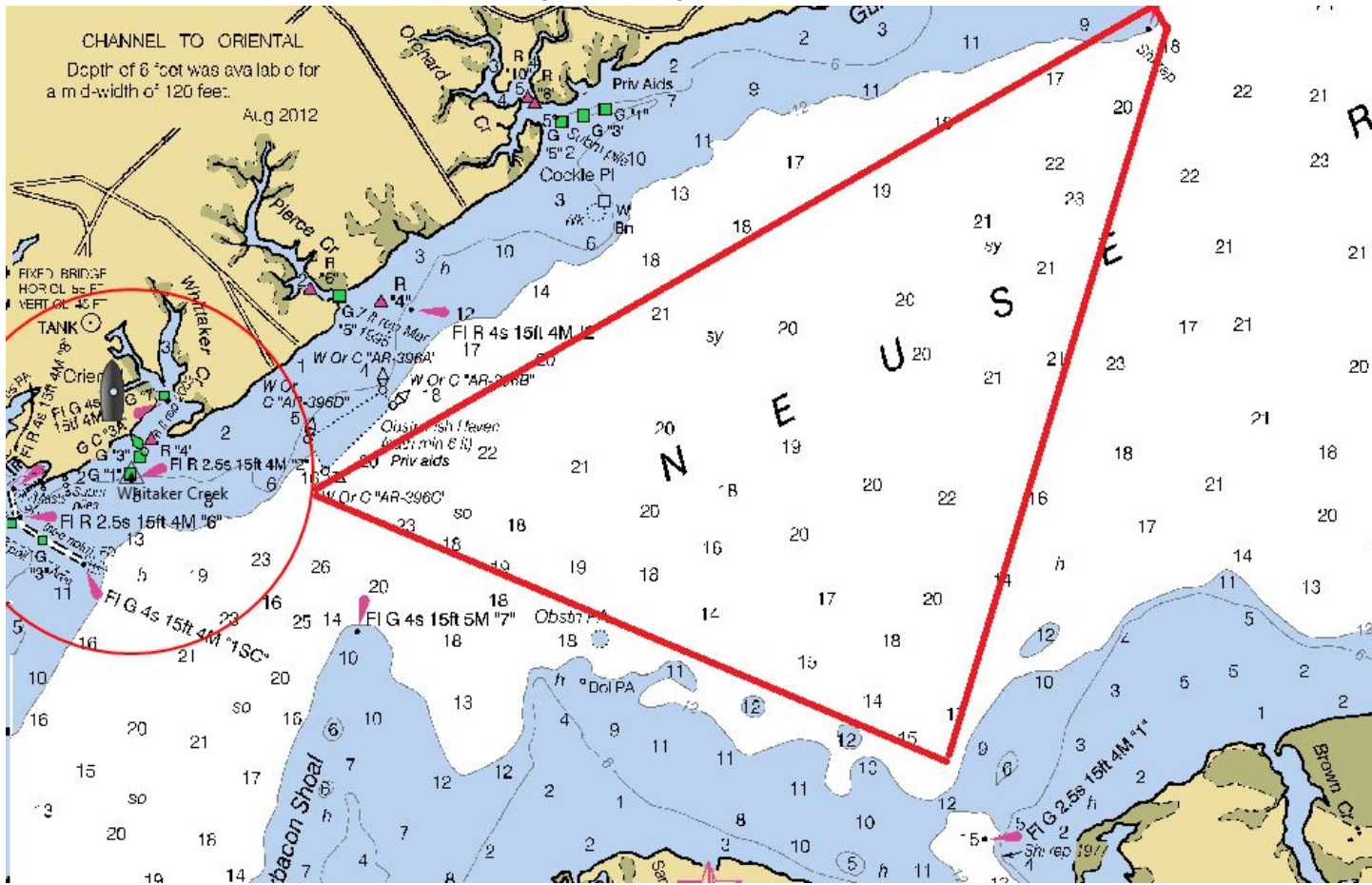
16 DISCLAIMER OF LIABILITY

Competitors participate in the regatta entirely at their own risk. See rule 4, Decision to Race.

APPENDIX



Cruising course diagram



Note: The Mark S (South River) shown above is not on the water and will not be used.